

GW304-CLFS67 Watertight IP67 Threaded Insert

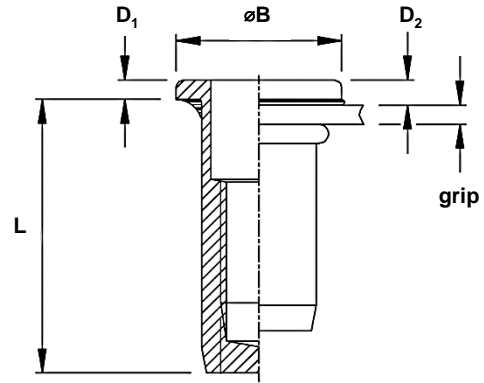
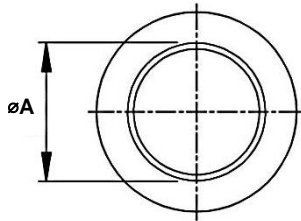
Stainless steel 304 · Large flange with underhead seal · Round · Closed end · IP67
M4 - M8

Features

- Non-reactive peripheral seal, made of flexible organic based material, is applied to the under head bearing surface of the threaded insert / rivet nut
- Seal is resistant to many automotive oils, antifreeze and transmission fluids, and assures IP 67 waterproofing
- During installation, the material is gap filling, and forms a robust seal between mating surfaces

Material

- Stainless steel 304



Part No.	Thread Size	Grip Range		Hole Size	øA	øB	D ₁	D ₂	L
		min.	max.						
GW304-CLFS67M4-0515	M4	0.5	1.5	+0.1	6.0	±0.35	-	-	±0.35
GW304-CLFS67M5-0525	M5	0.5	2.5	7.0	7.0	±0.35	-	-	17.5
GW304-CLFS67M5-2545		2.5	4.5						19.5
GW304-CLFS67M6-0525	M6	0.5	2.5	9.0	9.0	±0.35	-	-	21.5
GW304-CLFS67M6-2545		2.5	4.5						23.5
GW304-CLFS67M8-0525	M8	0.5	2.5	11.0	11.0	±0.35	-	-	23.5
GW304-CLFS67M8-2550		2.5	5.0						26.0

Thread Size	Max. torque	Pull-out	Torque-to-turn	Shear strength
	Nm max.	Kn	Nm	kN
M4	~7.1	> ~11.0	~2.6	~3.5
M5	> ~16.0	> ~14.5	~3.0	~4.8
M6	> ~22.0	> ~27.0	~6.8	~7.3
M8	> ~70.0	> ~40.0	~9.0	~9.0



Can't find what you are looking for?

We can provide unique and customized solutions.
Contact your nearest [Gripwell](#) team for assistance!